



**This presentation is dedicated to the Co. D 11<sup>th</sup> Combat Engineers “Jungle Cats” of Corozal, Canal Zone. The photos within are from the Service Album of Arthur Morgan who served with this unit in the late 1930s in the Canal Zone. The subject matter is road, culvert and bridge construction through the jungles of the Panama Canal Zone.**



On 20 November 1920, the unit was activated in the Panama Canal Zone as the 11th Engineer Regiment (Combat) and assigned to the Panama Canal Division on 2 June 1921. For the next 23 years, the 11th Engineers conducted numerous engineer missions over rugged terrain and through dense jungle. It was in Panama that the 11th adopted for its crest the Panama Black Panther and assumed the nickname "Jungle Cats."





### **Slicing through the jungle.**

I have studied the photos in this album to figure out Where these different roads, culverts and bridges were being constructed. Unfortunately the album didn't identify the projects. As you will see in the upcoming pages, one of these projects is close to the Panama Railroad line and I thought maybe that one of these projects could have been the Gamboa Pipeline Road.

From signage in two of the photos that these projects were accomplished during the dry season of 1939.





### **Supply Staging Area.**

Considering that this was 1939, there were no large dump trucks like we have today to haul sand, gravel, cement, lumber, etc. out to the project area, the next best resource would be the Panama Railroad. In these photos the Combat Engineers have set up a receiving area along the PRR tracks.

The top right photo shows smaller power lines going off to the left and to what appears to be a water tank. I can't figure this area out, but there is one identifier if I knew the locations of the number PRR power towers. In these photos, power line towers 39-16 and 39-17 ID plates can be read.

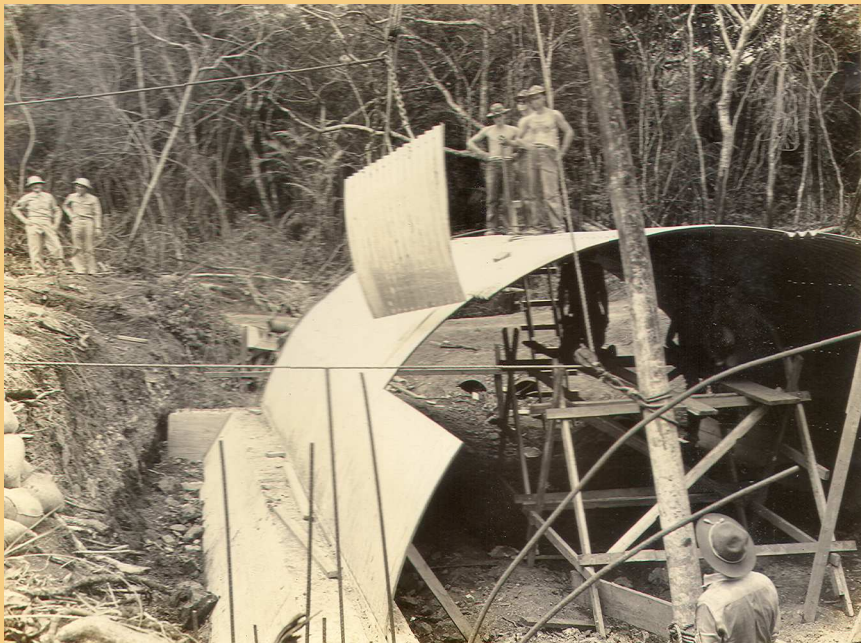




## Large Cylindrical Culverts

This and the next slide show the Combat Engineers building cylindrical culverts which I assume will be covered over by earth when completed. I didn't see a completed covered culvert of this type in any of the photos. These steel plates must have been quite thick and heavy as you can see the men struggling to maneuver the plates in place with a make-shift derrick.

These guys were tough doing this kind of labor in the Panama heat and no modern equipment







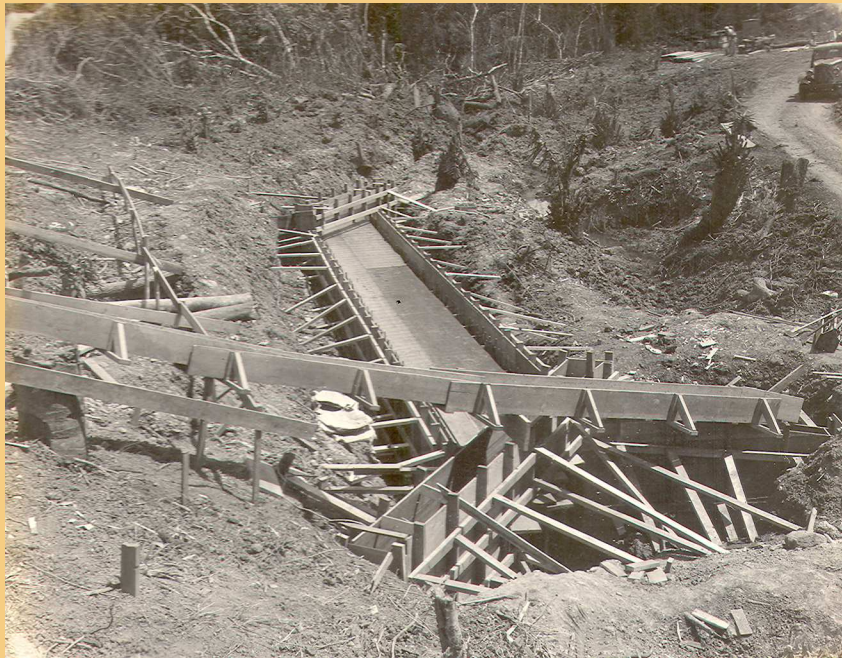




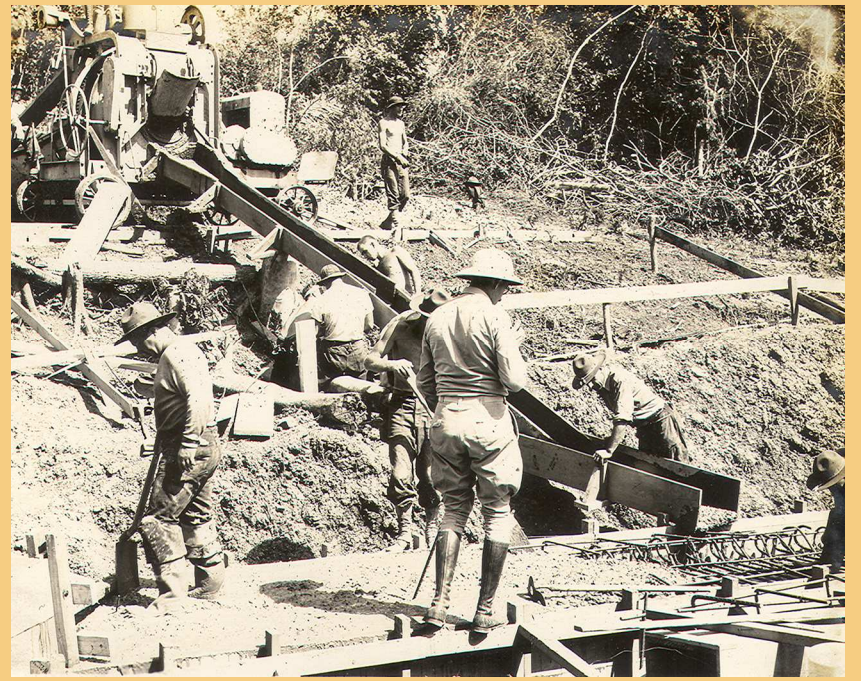
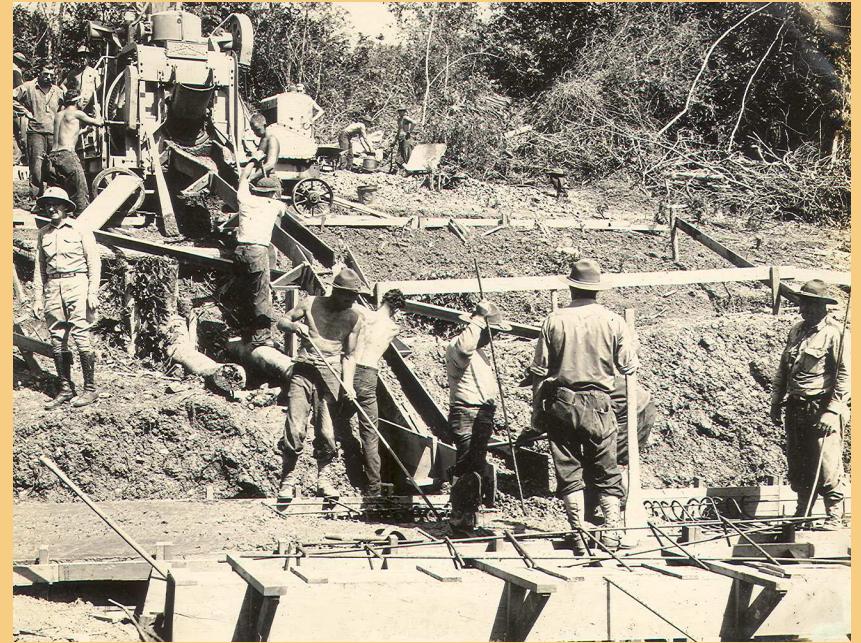
## Concrete Culvert

Here is a different type of culvert made with poured concrete. This culvert was built to last forever and is probably still there today.

The next couple of slides shows the men mixing and pouring the concrete and then the final product.











**The Final Product**







## Chow Time.

The top two photos show the field mess hall in action. These two photos must have been taken just up the Hill from the cement culvert as you can see the bags Of cement in the upper right photo.

The low right photo shows guys with different types of uniforms and headgear. There is a river behind them with a temporary pontoon bridge in place. I believe this Is a completely different location. Morgan is the second man from the left.





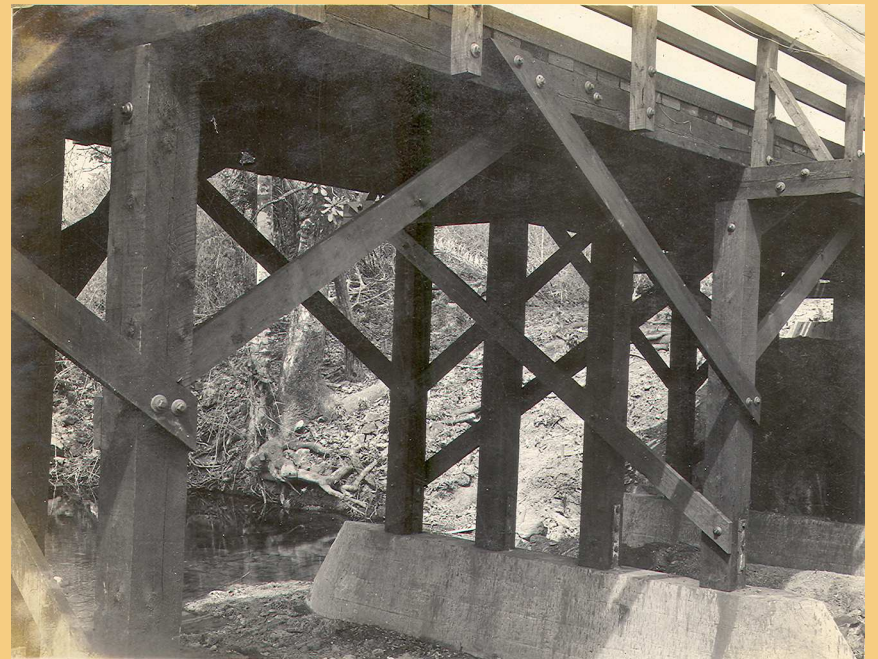
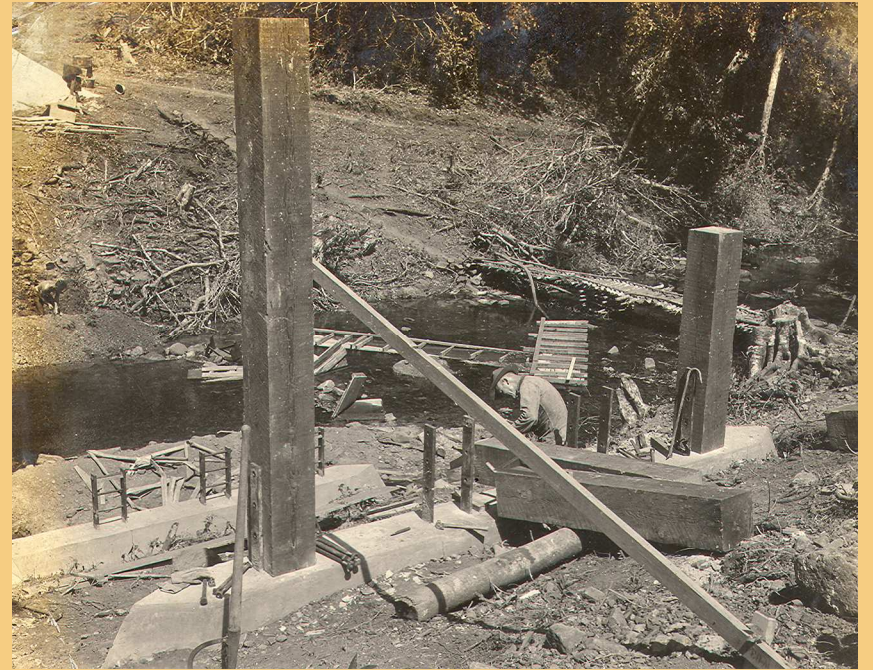


## Bridge Construction

This and the next two slides show bridge construction. These type of bridges were common on all the jungle military roads in the Canal Zone. I remember seeing them on the Gamboa Pipeline Road and all the K roads like K-9, K-6, etc. The bridges were constructed of heavy Creoseal treated lumber. This wood and good construction lasted for many years in the jungle.









## Finished Bridge





